

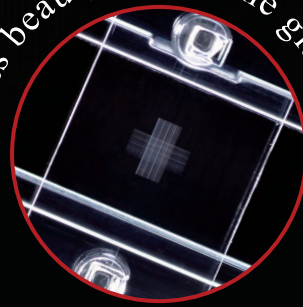


SMOOTHER than glass!

CLEARER than glass!



Its beauty excels the glass.



Disposable Cell Counting Plate

4-Grid

Cell Counter Plate

Cost-saving as 4-count per plate.

Better grid linearity & smoothness,
and lower cost compared with glass plate.

Easy to count due to clear visibility.

Plastic cover film is originally mounted on the plate.

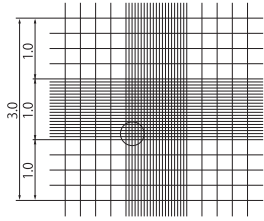
4 Grid patterns are available for choice.

GET IT
FOUR
PLATE

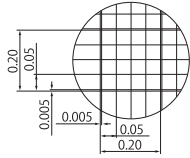
4 Grid Patterns

■ Neubauer Improved

177-112C

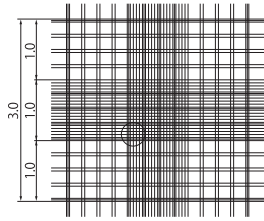


1/10mmdeep, 1/400 & 1/16sqmm

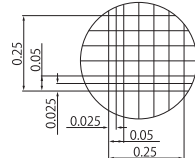


■ Burker-Turk

177-212C

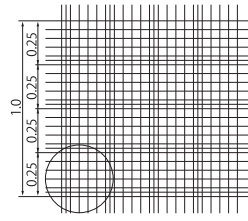


1/10mmdeep, 1/400 & 1/25sqmm

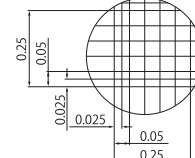


■ Thoma

177-312C

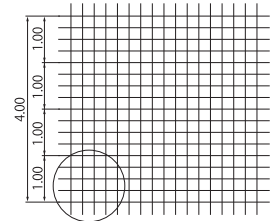


1/10mmdeep, 1/400sqmm

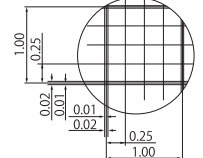


■ Fuchs Rosenthal

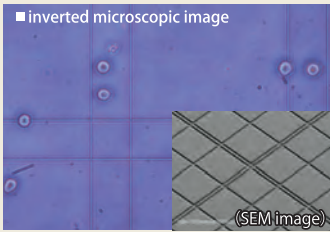
177-512C



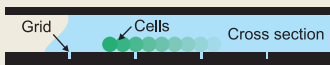
1/5mmdeep, 1/16sqmm



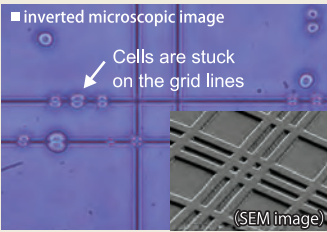
■ inverted microscopic image



Watson(Grid lines are in the groove form)



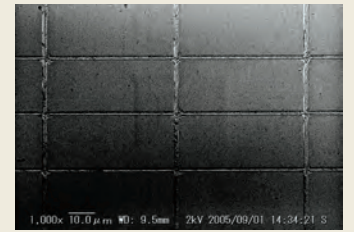
■ inverted microscopic image



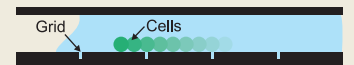
Other companies plastic grid(Grid lines are convex)



Easier to count because cells do not get stuck on the grid lines that are molded in the groove form. Cells are easier to be observed because the grid lines are thinner and smoother than glass slide.



Glass(Grid lines are rough)



The ready-mounted plastic cover film provides easy handling

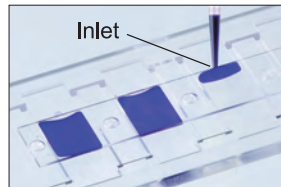
The cover film is originally mounted on the plate and it helps to reduce fluctuation of cell count caused by operator's skill.

Packaged in a plastic case

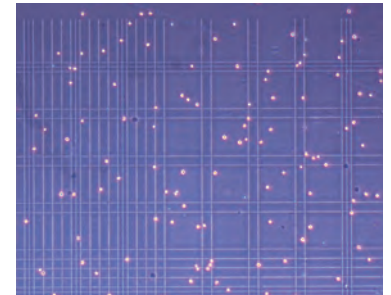
The plastic case prevents damage and stores cell counters safely and cleanly.



- 1 Pipette 6 μ L of a sample (12 μ L only for Fuchs Rosenthal) into inlet.



- 2 Set a cell counter on microscope and leave it for 2-3 minutes.



- 3 Count cells.
- 4 Calculate using a specified formula.

Cat.No.	Item	Packaging
177-112C	Cell Counter Neubauer Improved	10plates/box, 30boxes/units, 5units/case
177-212C	Cell Counter Burker-turk	10plates/box, 30boxes/units, 5units/case
177-312C	Cell Counter Thoma	10plates/box, 30boxes/units, 5units/case
177-512C	Cell Counter Fuchs Rosenthal	10plates/box, 30boxes/units, 5units/case

Something Different.
WATSON BIO LAB
MADE IN JAPAN SINCE 1988
<https://watsonbiolab.com>

Sales agency:
WATSON CO., LTD.

Export Division:
2-2-7 Murotani Nishi-ku Kobe, 651-2241, JAPAN
TEL 81-78-991-4489 FAX 81-78-991-4491

Head Office:
1F, 14-17 Daikanyama-cho, Shibuya-ku, Tokyo,
150-0034, JAPAN
TEL 81-3-5615-3591 FAX 81-3-6427-0740

E-mail:
tcr@watson.co.jp

Manufacturer:
FUKAOKASEI CO., LTD.

※The specification and the price etc. of the product might change without a previous notice.