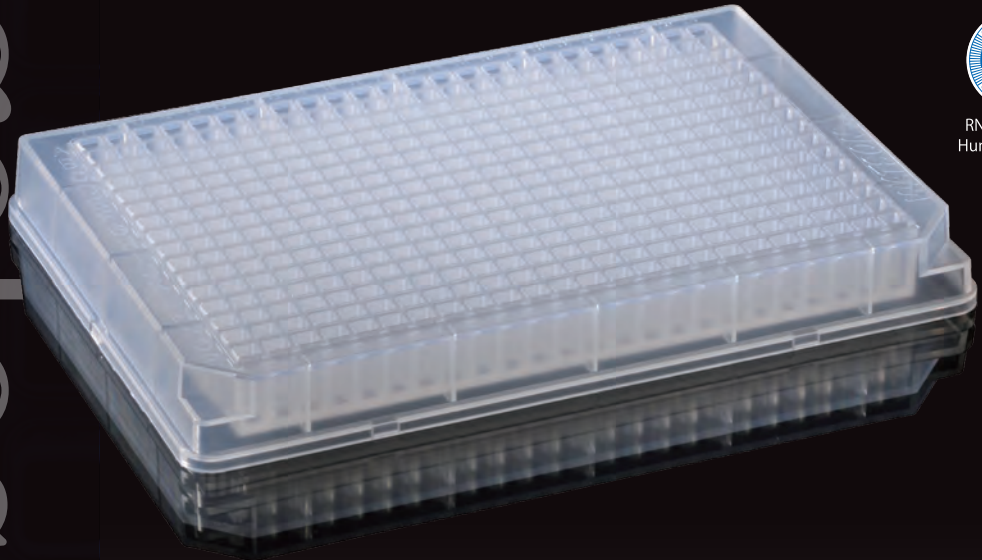


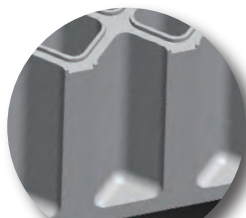
# Edgeless 384well Plate



RNase/DNase/  
HumanDNA free



**Edges do not exist in  
the square hole and the flat bottom  
of 3D well structure.**

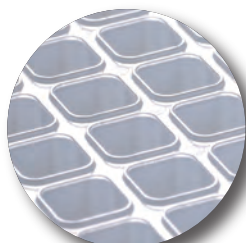


A crosssection

Edgeless design of well bottom and sidewall achieves excellent liquid release, less meniscus, and reduces bubble while pipetting.



A flat bottom surface allows easy visual recognition of a sample even in the small volume.



Individual rim of each well ensures tight sealing and prevents contamination.

Edgeless  
384well Plate

Something Different.

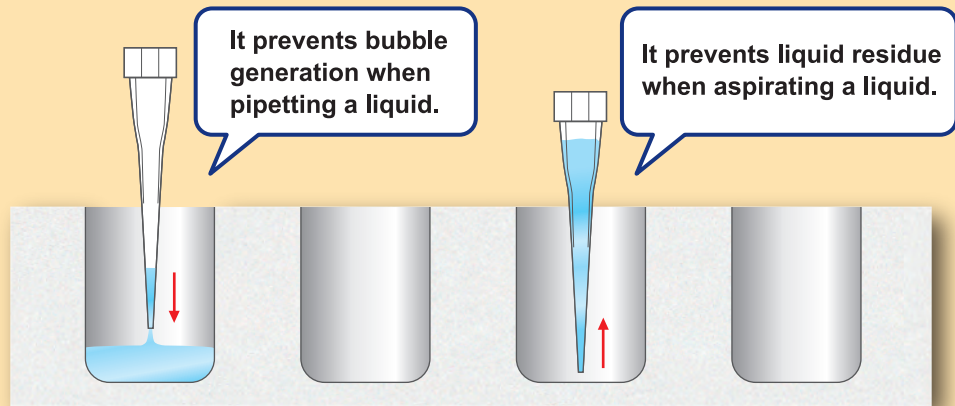
**WATSON** BIO LAB  
MADE IN JAPAN SINCE 1988



# Square hole • Flat bottom without edges, very unique moderated-contour bottom design.

## Edgeless well

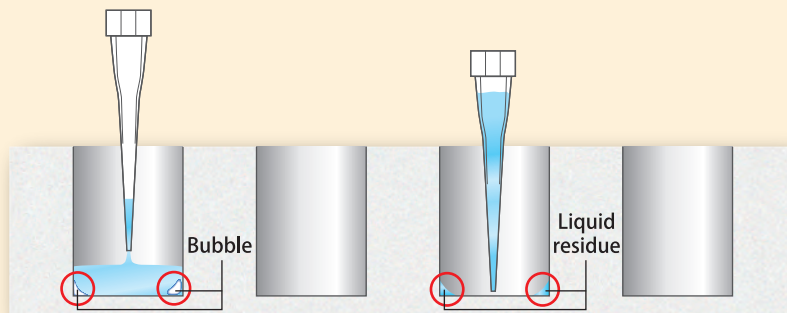
Advantages of edgeless



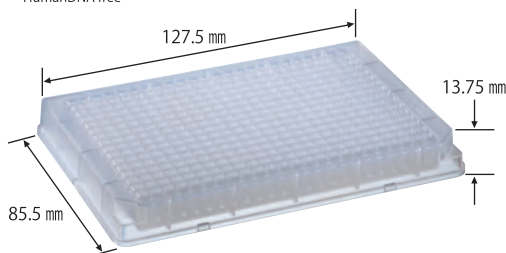
Note: These advantages are not always guaranteed since viscosity or surface tension of the liquid, or parameter setting of the pipetting device influence the performance.

## Conventional well

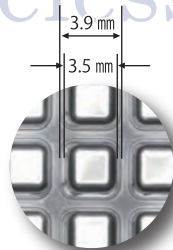
Conventional well causes bubbles or liquid residue at its edge.



RNase/DNase/  
HumanDNA free



# Edgeless 384well Plate



Spec :

Volume : 100  $\mu$ L / well

Material : PP (polypropylene)

Well design : Edgeless square

Well bottom : Edgeless flat

Cat. No.	Item	Unit	Case
1825-384E-110	Edgeless 384-well Plate	50 pcs. (5 pcs. $\times$ 10 bags)	5 units

Something Different.  
**WATSON** BIO LAB  
MADE IN JAPAN SINCE 1988  
<https://watsonbiolab.com>

Sales agency:  
**WATSON CO., LTD.**  
Export Division:  
2-2-7 Murotani Nishi-ku Kobe, 651-2241, JAPAN  
TEL 81-78-991-4489 FAX 81-78-991-4491  
Head Office:  
1F, 14-17 Daikanyama-cho, Shibuya-ku, Tokyo,  
150-0034, JAPAN  
TEL 81-3-5615-3591 FAX 81-3-6427-0740  
E-mail:  
**tcr@watson.co.jp**  
Manufacturer:  
**FUKAEKASEI CO., LTD.**



※The specification and the price etc. of the product might change without a previous notice.