

Something Different.

WATSON BIO LAB
MADE IN JAPAN SINCE 1988



The glass made slide enhances the image clarity.

SLIDE & CHAMBER

8well



4well



2well



Reasonable price

Individually sterilized

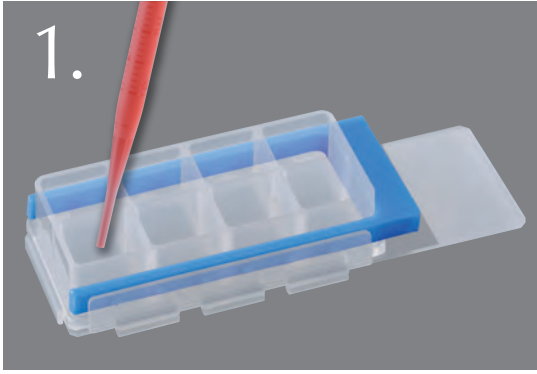
*Tight sealing
with the robust gasket*

*No adhesive used
to cause contamination*

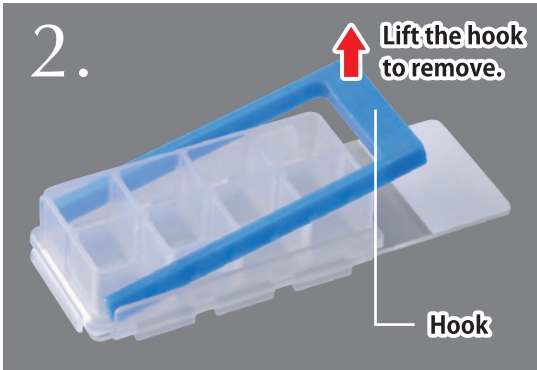
*Chemical resistant chamber
made of polypropylene*

Cat.No	Item	Unit	Case
192-008	Slide and Chamber 8-well sterilized	10 pcs. (individual blister packaging)	25 units
192-004	Slide and Chamber 4-well sterilized	10 pcs. (individual blister packaging)	25 units
192-002	Slide and Chamber 2-well sterilized	10 pcs. (individual blister packaging)	25 units

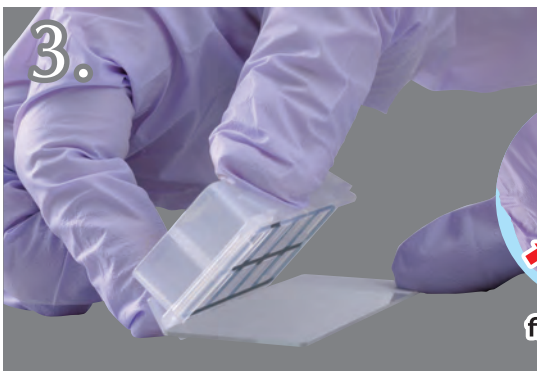
HOW TO USE



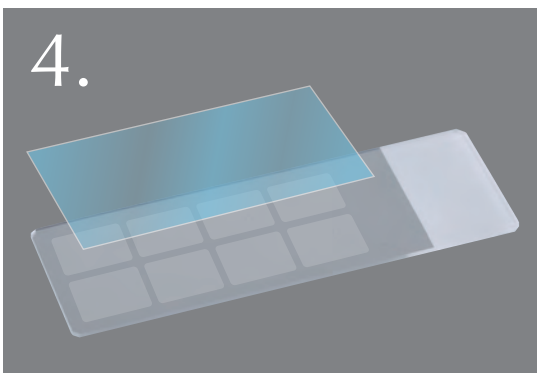
1. Dispense a sample into wells, place the cover on it, incubate, and immunostain.



2. Remove the hook after immunostaining.

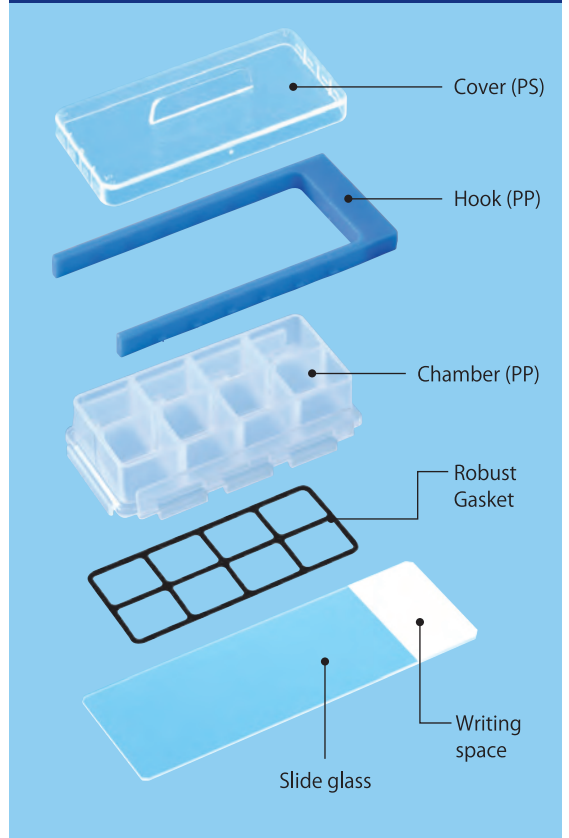


3. Remove the chamber from the slide glass.

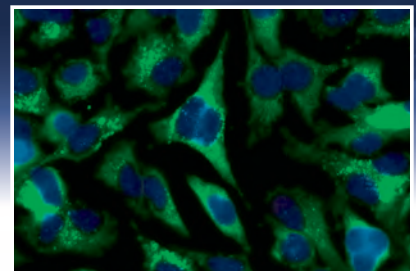


4. Prepare separately a cover glass (24mm x 55mm) and seal the sample.

No adhesive is used for WATSON Chamber Slide!



Glass enhances clarity!



The slide is made of glass and microscopic images are very clear.

Something Different.
WATSON BIO LAB
MADE IN JAPAN SINCE 1988
<https://watsonbiolab.com>

Sales agency:
WATSON CO., LTD.
 Export Division:
 2-2-7 Murotani Nishi-ku Kobe, 651-2241, JAPAN
 TEL 81-78-991-4489 FAX 81-78-991-4491
 Head Office:
 1F, 14-17 Daikanyama-cho, Shibuya-ku, Tokyo,
 150-0034, JAPAN
 TEL 81-3-5615-3591 FAX 81-3-6427-0740
 E-mail:
tcr@watson.co.jp
 Manufacturer:
FUKAEKASEI CO., LTD.

*The specification and the price etc. of the product might change without a previous notice.