



## Cell Aggregate Recovery Device

# Spheroid Catch



**Filtering with  
natural dropping force**

The mesh catches spheroids

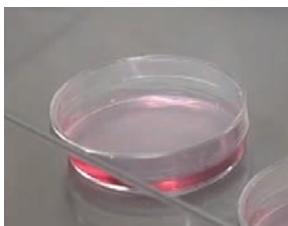
Size: Max Diameter 30mm × 40mm H  
Material: Polypropylene (body) / Nylon (mesh filter)

### Recover large spheroids at once!

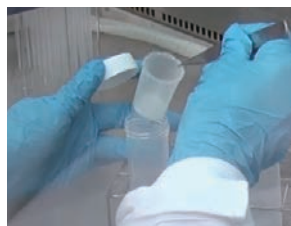
- Rapidly screen spheroids that have been cultured in dish.
- Recover only spheroids larger than 77 $\mu$ m hole.
- Only the mesh can be taken off, making it easy to breakup recovered spheroids. Speeding up passage process.

Cat. No.	Item	Unit
1884-110CS	Spheroid Catch <span style="color: red; font-weight: bold;">Sterilized</span>	20 pieces

## Protocol



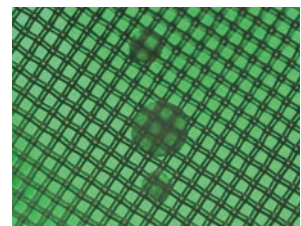
① Prepare a dish with cultured spheroids.



② Set Spheroid Catch into a 50mL centrifuge tube.



③ Apply the spheroid-cultured medium into Spheroid Catch.



④ The mesh catches large spheroids.

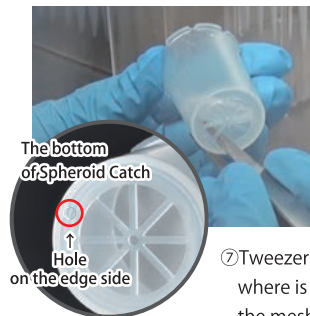


⑤ Wash mesh filter with PBS (-).

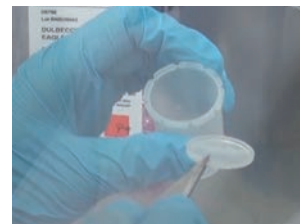
\*If containing liquids on the mesh, apply light centrifuge before proceeding to the next step.



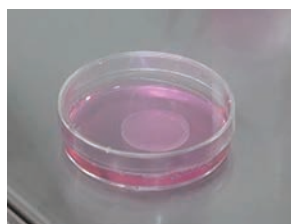
⑥ Take off Spheroid Catch from a 50mL centrifuge tube.



⑦ Tweezer the edge side of small hole (Not centered) where is on the side of the bottom, then take off the mesh.



⑧ Soaking the mesh into the new medium results in easy removal of spheroids.



⑨ Use recovered spheroids for test.

